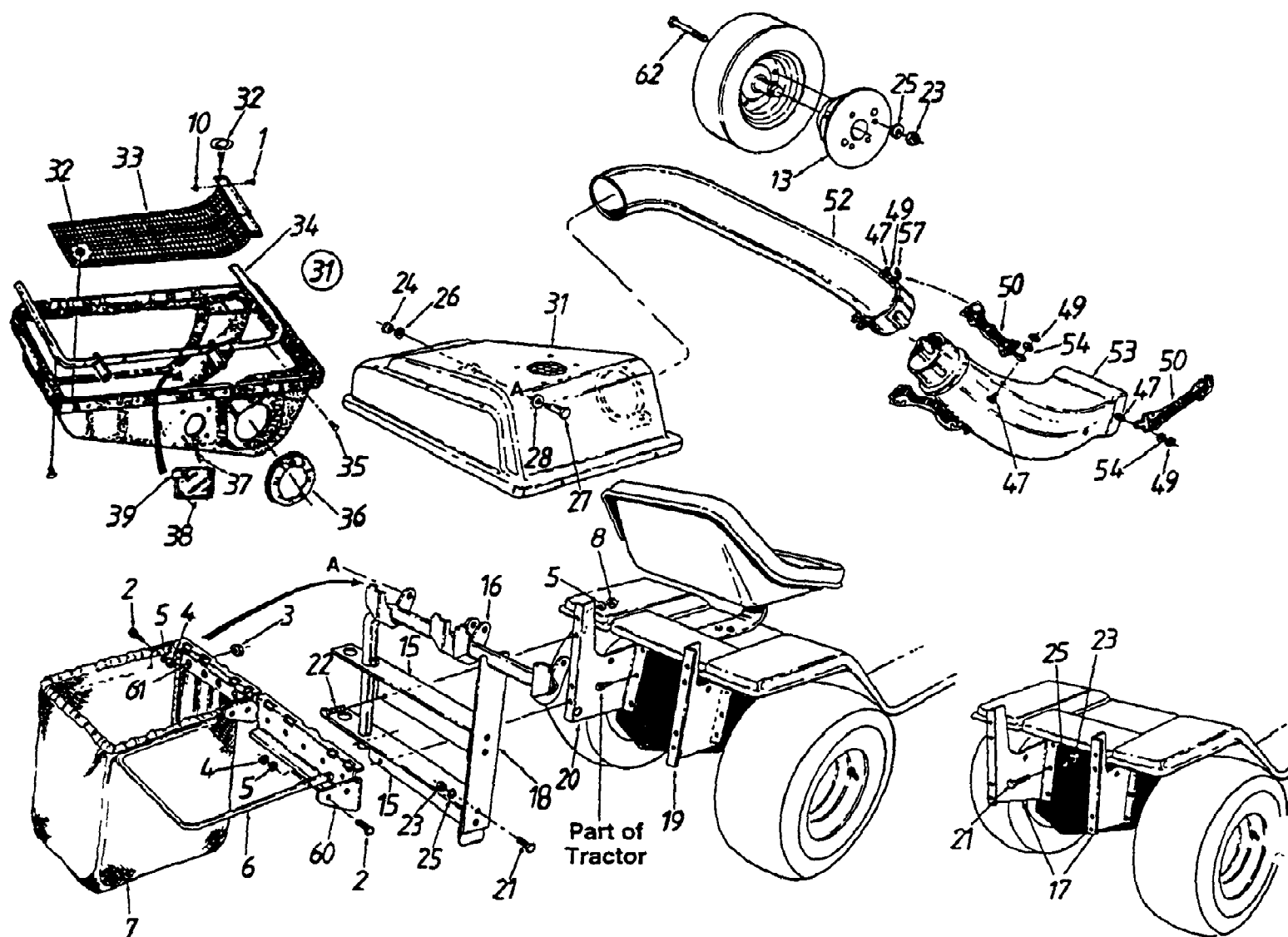


190-103-000 (1998)
Grass Collector

Page 1 of 2



190-103-000 (1998)
Grass Collector

Page 2 of 2

| Ref # | Part Number | Qty | S/P/F | Description |
|-------|-------------|-----|-------|----------------------------------|
| 1 | 728-0123 | 1 | S | Pop Rivet .188 Dia. |
| 2 | 710-0281 | 1 | /P | Hex Bolt 1/4-28 x.88" Lg. |
| 3 | 712-0272 | 1 | /P | Hex Sems Nut #10-24 Thd. |
| 4 | 712-0138 | 1 | S/F | Hex Nut 1/4-28 Thd. |
| 5 | 736-0329 | 1 | S/F | L-Wash. 1/4" I.D. |
| 6 | 749-0701 | 1 | S | Catcher Bag Frame |
| 7 | 764-0221 | 1 | S | Grass Catcher Bag |
| 8 | 712-0287 | 1 | S/F | Hex Nut 1/4-20 Thd. |
| 10 | 736-0400 | 1 | S | Flat Wash. 1/4" I.D. |
| 13 | 723-0414B | 1 | | Wheel Weight |
| 15 | 16587B | 1 | S | Catcher Support Tube Mtg. Brkt. |
| 16 | 16592 | 1 | S | Catcher Support Tube Ass'y. |
| 17 | 16672A | 1 | S/F | Catcher Support Brkt. |
| 18 | 16593A | 1 | S | Catcher Latch and Support Brkt. |
| 19 | 16611C | 1 | S/F | Catcher Support Brkt.- R.H. |
| 20 | 16610C | 1 | S/F | Catcher Support Brkt.- L.H. |
| 21 | 710-0118 | 1 | S/F | Hex Bolt 5/16-18 x .75" |
| 22 | 710-0751 | 1 | /P | Hex Bolt 1/4-20 x.62" - Gr. 5 |
| 23 | 712-0267 | 1 | S/F | Hex Nut 5/16-18 Thd. |
| 24 | 712-0798 | 1 | /P/F | Hex Nut 3/8-16 Thd. |
| 25 | 736-0119 | 1 | S/F | L-Wash. 5/16" I.D. |
| 26 | 736-0169 | 1 | S/F | L-Wash. 3/8" I.D. |
| 27 | 738-0380 | 1 | S | Shld. Bolt 3/8-16 x.50" Dia. |
| 28 | 736-0253 | 1 | S | Bell-Wash .505" I.D. x 1.0" O.D. |
| 31 | 16594A | 1 | | Grass Catcher Cover Ass'y. |
| 32 | 726-0258 | 1 | | Twist Fastener |
| 33 | 16847A | 1 | | Screen Ass'y. |
| 34 | 16596 | 1 | S | Hinge Brkt. Ass'y. |
| 35 | 710-0776A | 1 | S | Hex AB-Tap Scr. 1/4 x .62" |
| 36 | 723-0412 | 1 | /P | Seal |
| 37 | 710-0351 | 1 | /P | Truss B-Tap Scr. #10 x .5" |
| 38 | 731-0824A | 1 | /P | Plastic Plate |
| 39 | 726-0244 | 1 | S | Speed Nut |
| 47 | 710-0258 | 1 | S/F | Hex Bolt 1/4-20 x .625" |
| 49 | 712-0324 | 1 | /P | Hex Ins. L-Nut 1/4-20 Thd. |
| 50 | 723-0383 | 1 | S | Retainer Strap Ass'y. |
| 52 | 731-0899 | 1 | S | Catcher Tube |
| 53 | 731-0827A | 1 | S | Discharge Chute |
| 54 | 736-0175 | 1 | S | L-Wash .27" I.D. |
| 57 | 16606 | 1 | S | Retainer Hook Brkt. |
| 60 | 16591 | 1 | S | Bag Frame Hanger Brkt. |
| 61 | 710-0473 | 1 | /P | Truss Mach. Scr. #10-24 x .5" |
| 62 | 710-0190 | 1 | /P | Hex Bolt 5/16-18 x .4" Lg. |